



Project part-financed by the European Union (ERDF + TACIS) within the BSR INTERREG III B NP programme

# HINTERLAND Vitality Check

Examples from typology: *Tyruliai – Type Nr. 9*

## **TYRULIAI**



**Inhabitants:** 419  
**Municipality:** Radviliškis District  
**County:** Šiauliai  
**Vorderland distance:** 13 km



A voice from Tyruliai:

***“We want to consolidate and embellish our sub-district.”***

*The head of township Rimantas Liukumas*



Project part-financed by the European Union (ERDF + TACIS) within the BSR INTERREG III B NP programme

**We are type Nr. 9!** *What does it mean for our village and what do we have to do?*

## **Strengthen the strengths!**

### **Economy**

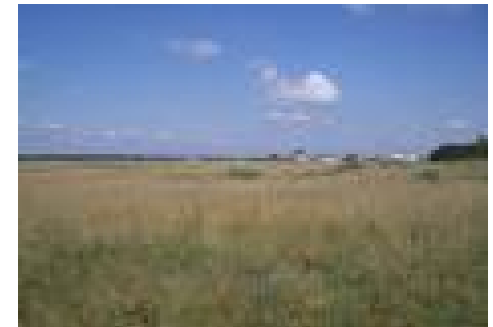
- *Number of farms - 250. Service enterprises – 2.*
- *Active turf extraction enterprise.*
- *Developed fishery.*
- *Required increase of efficiency of agricultural activities*
- *To encourage alternative activities.*
- *To increase the efficiency of agricultural activities*

### **Social life**

- *Rural communities – 2.*
- *To encourage the activities of artistic collectives*
- *To organise traditional cultural events.*

### **Reduce the risks!**

- *Poor communication may stimulate migration processes, Therefore it is necessary to initiate the projects of the roads improvement.*
- *Low employment.*
- *Lots of ownerless buildings.*
- *Communal activities are weak, therefore it would be required to pay more attention to communities.*



*Unique, picturesque corners of the nature*